



NEWSLETTER

July/August 2005

New Price List

Our 2005 price list has now been fully distributed and you should have received your copy. If you have not already received one, or you require any extra copies for your consultants please contact us. While we make every effort to produce a price list without errors, unfortunately we still missed a few so please note the changes listed below. This pricelist is full of information about our products.

Also Please note: Our price list is a retail price list (Showroom Price List) and is **not** your "wholesale" price. While the majority of your staff will already be aware of this, it is important that any new staff be aware of this point therefore avoiding any over quoting and the potential loss of a sale. We have done our pricelist this way for the past 6 years but we still have the occasional client who misses this vital point.

Corrections

Page 1.

Woven Timber.

Group 3 Rollup should read Champagne (190)

Page 9.

Visionwood: 50mm width blades.

Correct Prices

600mm wide x 2000mm drop = \$228
1300mm wide x 1100mm drop = \$285
1900mm wide x 1800mm drop = \$464
2000mm wide x 1800mm drop = \$485
2000mm wide x 2900mm drop = \$593
2000mm wide x 3000mm drop = \$609
2200mm wide x 600mm drop = \$327

Page 19.

Shangri-La Classic sheer collection (top price grid)

600mm wide x 900mm drop = \$340
600mm wide x 1050mm drop = \$350
2100mm wide x 1050mm drop = \$1070
2100mm wide x 1350mm drop = \$1220

Page 12.

Sheerweave 5000 width is 1880mm

Page 21:

Simply Roman oversized blinds reads + 20% for when it should read +10%

Page 22.

Simply Roller I & II Group 2 Blockout
800mm wide x 2600mm drop = \$316
800mm wide x 2800mm drop = \$325

Remove note 2 reference to base bar.

Page 11. Missing Photo: Rollscreen brackets

The 40 mm bracket is standard. It has a total projection of 60mm. The 55 mm bracket is an extension. It has a total projection of 75mm.



Features and Benefits:

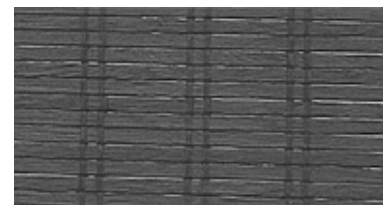
We have found that one of the best ways to show your client the features and benefits of our more exotic weaves such as The Urban Weaves and the Chinois collection is by holding a sample up to the light. Sound simple? This not only shows how the design will look at their window but gives them a better idea as to how much light it will allow in during the day and also in most cases gives the design an added dimension.

Click Track;

Since the release of our popular Click Panel system we have been working on various ways to improve its versatility. We have now introduced a new track which is about 70mm deep including the brackets and allows for better stack back and smoother operation.

Toulouse:

There has been a slight change to the specifications of Toulouse regarding the vertical stitch lines. It now comes in a double stitch as shown. While the overall effect is the same it is important to remember in case you have to add to an existing job.



Simply Roman II

Sample sets are now in stock and being distributed. The response to this new range has been excellent so if you require more samples or haven't seen the range yet, please advise head office or your local agent. Cost is only \$40 for this versatile sample.

E-Mails

We are updating our customer database all the time and wish to be able to contact our customers quickly and effectively by E-Mail. Please send your details to.

reception@petermeyerblind.com.au

www.petermeyerblind.com.au

Make this the year you learn about motorisation

New South Wales, ACT & WA Phone: (02) 8762 1900 Fax: (02) 8762 1901 Victoria - Metro Phone: (03) 9736 1917 Fax: (03) 9737 0632
Victoria Country - Agent Phone: 0418 579 579 Fax: (03) 5831 2678 Tasmania - Agent Phone: 0407 877 285 Fax: (03) 6334 6133
Queensland - Agent Phone: (07) 3368 2338 Fax: (07) 3844 8415 South Australia - Agent Phone: (08) 8277 3081 Fax: (08) 8374 0024